



STOCKTON
REAL ESTATE ADVISORS

THE GRAHAM BUILDING

at Dilworth Park

5,446 SF AVAILABLE FOR LEASE



SPACIOUS & MODERN COLLABORATIVE WORK SPACE

- 5,446 SF move-in ready space available on the 5th floor
- Open floor plan for a collaborative atmosphere
- Exposed ceilings with polished concrete floors
- Multiple huddle rooms and phone booths throughout the space

Contact Information

Stockton Real Estate Advisors

1760 Market Street, Suite 900

Philadelphia, PA 19103

215-636-4444 | www.StocktonREA.com

Michael Dolan

(O) 215-636-4442

(M) 610-529-2079

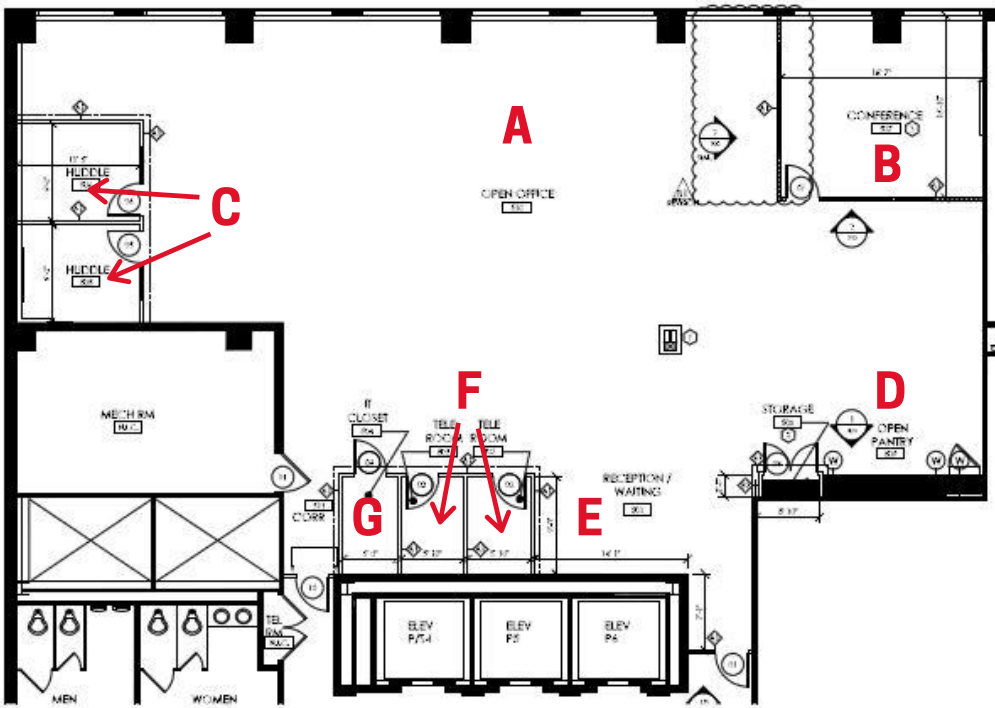
mdolan@StocktonREA.com

Jacklyn Hadzor

(O) 215-391-4803

(M) 609-760-9985

jhadzor@StocktonREA.com



SUITE HIGHLIGHTS

- (A) 35 Workstations
- (B) 1 Large conference room
- (C) 2 Huddle rooms
- (D) Kitchen
- (E) Inviting reception area
- (F) 2 Phone booths
- (G) IT Closet



Premier location within the core of Philadelphia's CBD

- Boutique class A office building prominently situated at the SW corner of Dilworth Park overlooking City Hall.
- Located just one-half block away from SEPTA's Regional Rail, Subway and Trolley Lines at City Hall and Suburban Station
- Outstanding array of nearby amenities including fine dining, numerous theater venues, upscale retailers and luxury hotels, including the Ritz Carlton, conveniently located across the street.

Be a part of The Graham Building and enjoy concierge style services along with a curated tenant mix.

Featured Tenants



tempest
interactive media



Contact Information

Stockton Real Estate Advisors

1760 Market Street, Suite 900
Philadelphia, PA 19103
215-636-4444 | www.StocktonREA.com

Michael Dolan

(O) 215-636-4442
(M) 610-529-2079
mdolan@StocktonREA.com

Jacklyn Hadzor

(O) 215-391-4803
(M) 609-760-9985
jhadzor@StocktonREA.com