

NOT
FOLLOWING SUIT

*suit yourself
on 15.*

1760
MARKET

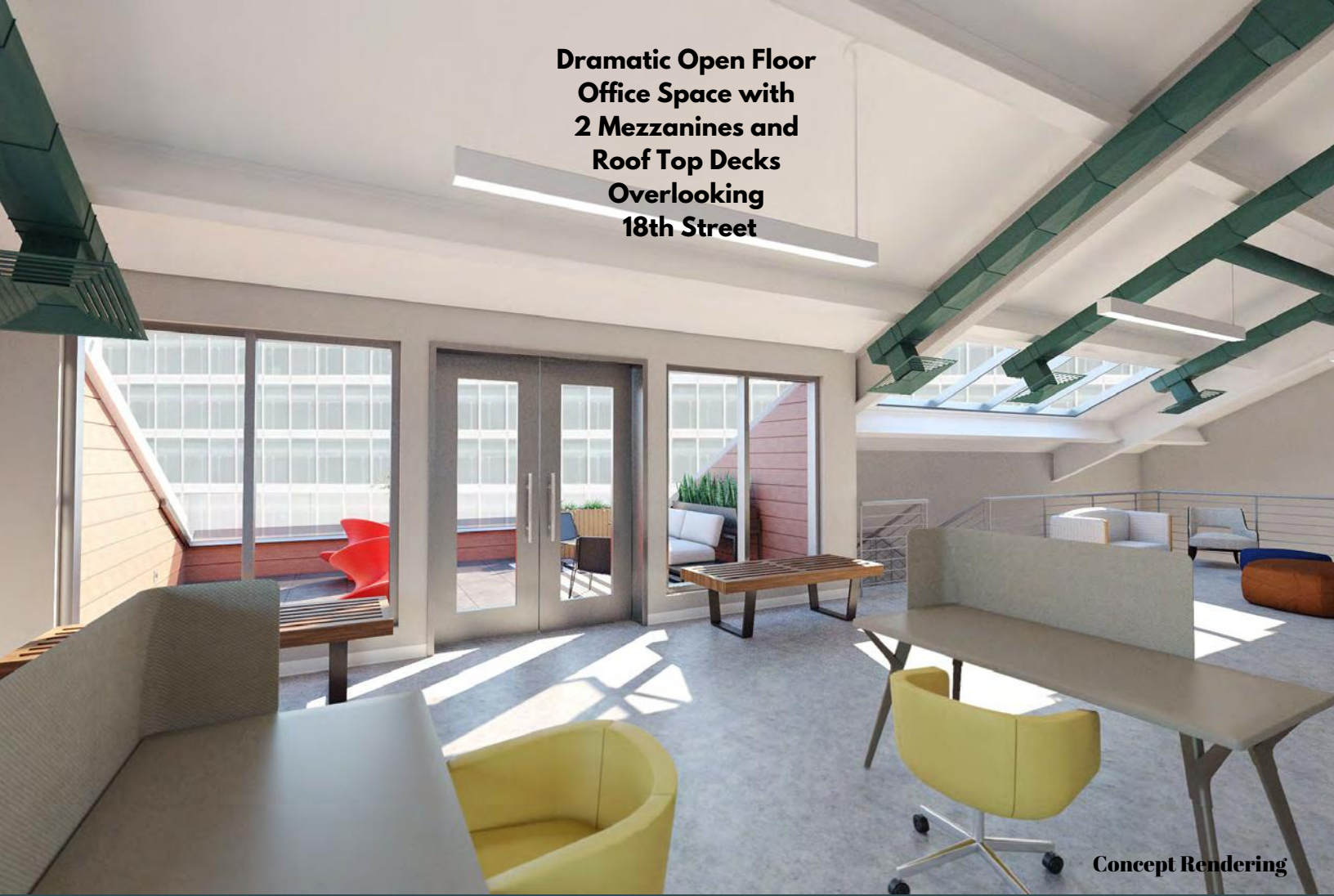


Concept Rendering

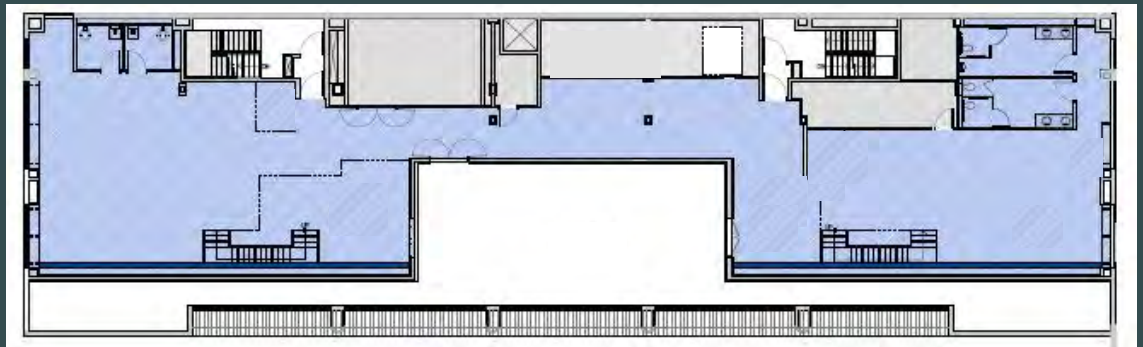
Spectacular one-of-a-kind
penthouse space with two
private outdoor roof decks

S
STOCKTON
REAL ESTATE ADVISORS

**Dramatic Open Floor
Office Space with
2 Mezzanines and
Roof Top Decks
Overlooking
18th Street**

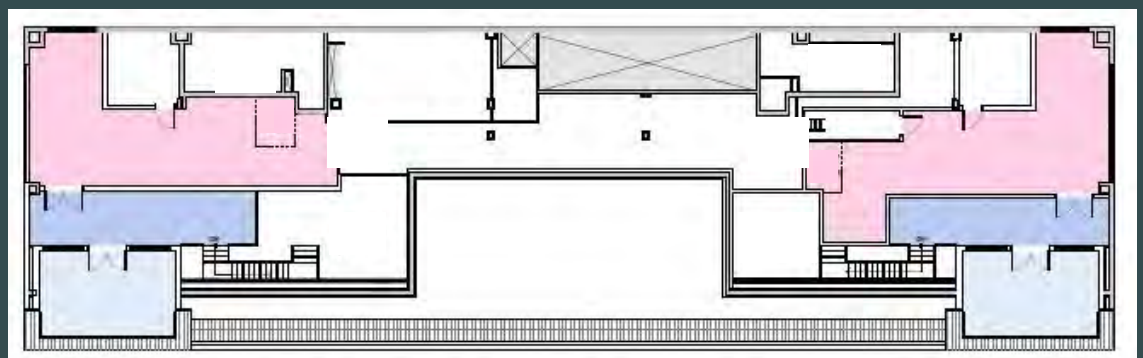


**15th FLOOR
PENTHOUSE
9,668 RSF
Including
Mezzanines**



15th Floor Interior

**Up to
~20,000 SF
when
combined with
contiguous
space on 14th
floor**



15th Floor Mezzanine

HIGHLIGHTS

EXCLUSIVE... Unparalleled penthouse office space on the premier corner of 18th & Market Streets in Market West. 1760 Market Street offers users a "boutique" experience, while providing a Class A environment.

UNPRECEDENTED... The 15th Floor space may be configured for one or two mezzanines with private elevators, and one or two private roof decks overlooking 18th Street with spectacular views of the Comcast Towers and Rittenhouse Square.

CENTRAL... 1760 Market Street is located 3 blocks from Rittenhouse Square and Rittenhouse Row's high-end shops, and less than one block from the Sonesta Hotel, Ruth's Chris Steakhouse, The Love, DiBruno Bros., The Continental, Dandelion, the Pyramid Club, and many more retailers, restaurants, and residences.

SUBSTANTIAL... Join prestigious tenants Security Risk Advisors, The Philadelphia Trust Company, Abacus Wealth Advisors, Anderson Kill, HBKS Wealth, MissionOC, Kutak Rock, and The MandMarblestone Group.



Concept Rendering - entryway



Concept Rendering - Interior with stairs to Mezzanine



Concept Rendering - Interior



Concept Rendering - Roof Deck overlooking 18th Street

To schedule a tour,
contact:

Jim Paterno
P: 215-636-4440
M: 215-840-1930
E: jpaterno@stocktonREA.com

Drew Maristch
P: 215-636-4441
M: 215-605-8018
E: dmaristch@stocktonREA.com



1760 MARKET STREET, LLC
1760 Market Street
Suite 900
Philadelphia, PA
19103

215-636-4444
www.1760market.com