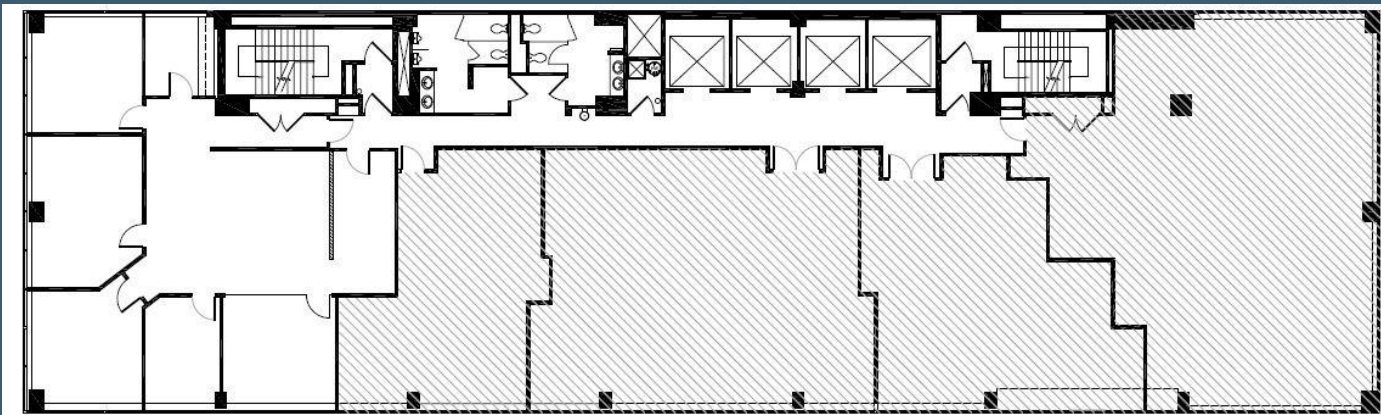


17
60
MKT

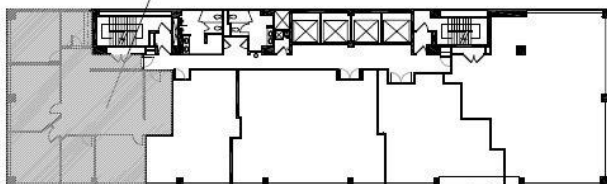
1760 MARKET STREET

PHILADELPHIA, PA 19103

SUITE 400 | CORNER OVERLOOKING CITY HALL | 2,784 SF



Premises



Key Plan
Scale: N.T.S

Key Features

- 3 Sides of Glass
- Overlooks City Hall and 18th Street
- 4 Private Offices
- Open Space
- Conference Room
- Law Office Fit Out



STOCKTON
REAL ESTATE ADVISORS

1760 Market Street, Suite 900
Philadelphia PA 19103

For more information,
please contact:

Jim Paterno
jpaterno@stocktonrea.com
M: (215) 840-1930
O: (215) 636-4440

1760 MARKET STREET

SUITE 400 | CORNER OVERLOOKING CITY HALL | 2,784 SF

BE PART OF THE "18TH STREET EXPERIENCE"

1760 Market is located adjacent to Rittenhouse Square's lively restaurants, cafés, bars, and shops while remaining linked to the business and technology hub along Market Street.

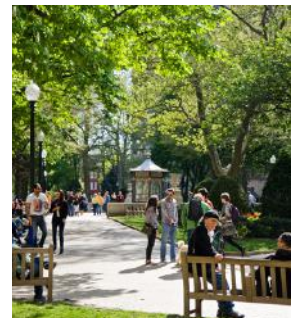


BUILDING FEATURES

- Sophisticated boutique environment
- On-site building management
- Keystone Innovation Zone opportunity
- Tenant lounge and Building conference center
- Designated bike room
- 24/7 manned security desk

Steps away...

- Located 2 blocks from Rittenhouse Square and 4 blocks from City Hall
- Exceptionally walkable location surrounded by numerous restaurants, hotels, and parks
- Immediate access to the Concourse and Suburban Station



WALK SCORE



100

TRANSIT SCORE



100



STOCKTON
REAL ESTATE ADVISORS
1760 Market Street, Suite 900
Philadelphia PA 19103

For more information,
please contact:

Jim Paterno
jpaterno@stocktonrea.com
M: (215) 840-1930
O: (215) 636-4440