

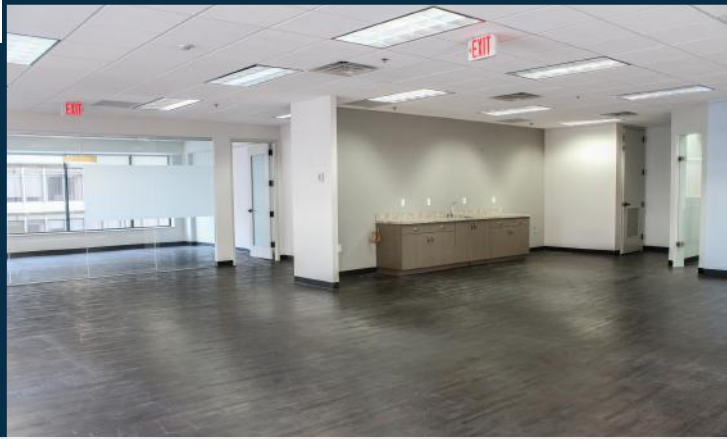
1760 MARKET STREET

PHILADELPHIA, PA

17
60
MKT

SUITE 904 | 2,744 RSF

MOVE-IN READY







OPEN FLOOR PLAN



CORNER CONFERENCE ROOM

SPACE HIGHLIGHTS

-  High-end finishes with custom hardwood flooring
-  Conference room overlooking Market Street with spectacular corner view of City Hall
-  Flexible layout with large, open work area
-  Large windows with an abundance of natural light facing 18th & Market Street

SUITE 904
VIRTUAL TOUR



BUILDING FEATURES

- Sophisticated boutique environment
- On-site building management
- Keystone Innovation Zone opportunity
- Tenant lounge and building conference center
- Designated bike room
- 24/7 manned security desk



ADDITIONAL BUILDING ENHANCEMENTS PLANNED

NOW UNDER NEW OWNERSHIP



STOCKTON
REAL ESTATE ADVISORS

PRIME MARKET STREET LOCATION AT THE LOWEST MARKET (STREET) RATE!

- Column-free floor plates providing maximum efficiency and flexible open floor plans.
- Unparalleled connectivity with easy access to Suburban Station, I-676, I-76, and I-95. Conveniently located minutes from PATCO Speedline and 30th Street Station.



TENANT LOUNGE & CONFERENCE ROOM

BUILDING AMENITIES



Conference Center



Bike Storage



On-Site Management



Tenant Lounge



On-Site Banking



24/7 Security

Prime corner office building located directly on Philadelphia's "Pedestrian Highway"

RETAIL
NEW & COMING SOON

EQUINOX
Levain
GLOWBAR
WORLD OF FLIGHT
ARITZIA + FIGS
SKIN LAUNDRY

FLIGHT CLUB
ayat
Lucy's
Reformation



WALK SCORE
100

TRANSIT SCORE
100

BIKE SCORE
82

Nearby Amenities

- Parking
- Hotels
- Gyms

Jacklyn Hadzor
609.760.9985
jhadzor@StocktonREA.com

Stockton Real Estate Advisors, LLC
1760 Market Street, Suite 900, Philadelphia, PA
215.636.4444 | www.StocktonREA.com

