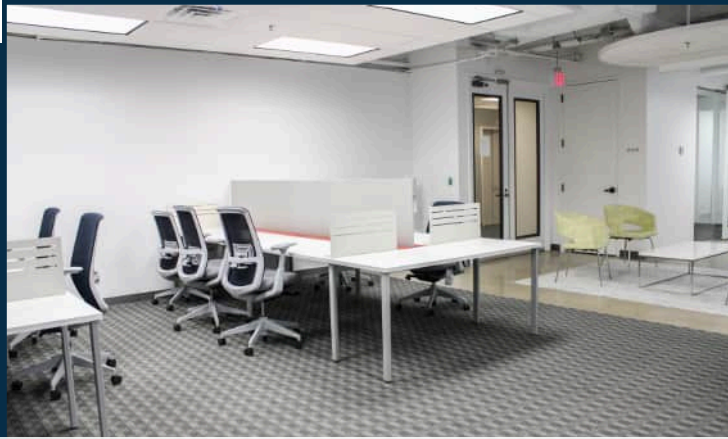


1760 MARKET STREET PHILADELPHIA, PA

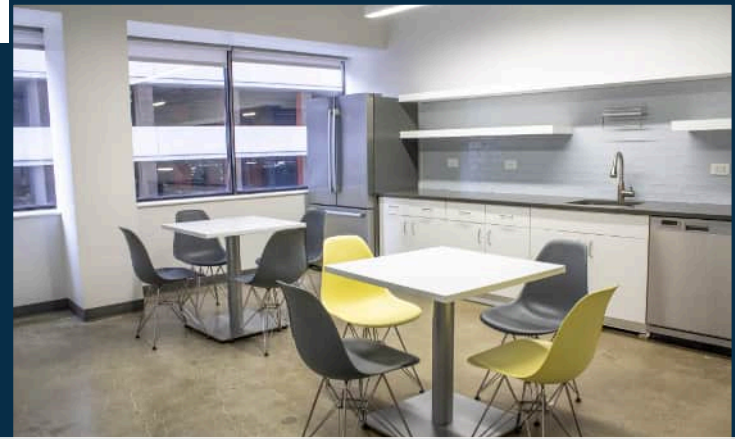
1760
MKT

SUITE 401 | 2,910 RSF

FULLY FURNISHED, MOVE-IN READY SUITE



FLEXIBLE, OPEN WORK AREA



FULL KITCHEN

SPACE HIGHLIGHTS



High-end finishes with concrete polished floors



4 private offices, conference room, collaboration room, and 2 private call rooms



Flexible, open area workspace, full kitchen with dining area, individual lockers

SUITE 401
VIRTUAL TOUR



BUILDING FEATURES

- Sophisticated boutique environment
- On-site building management
- Keystone Innovation Zone opportunity
- Tenant lounge and building conference center
- Designated bike room
- 24/7 manned security desk



ADDITIONAL BUILDING ENHANCEMENTS PLANNED

NOW UNDER NEW OWNERSHIP



STOCKTON
REAL ESTATE ADVISORS

PRIME MARKET STREET LOCATION AT THE LOWEST MARKET (STREET) RATE!

- Column-free floor plates providing maximum efficiency and flexible open floor plans.
- Unparalleled connectivity with easy access to Suburban Station, I-676, I-76, and I-95. Conveniently located minutes from PATCO Speedline and 30th Street Station.



TENANT LOUNGE & CONFERENCE ROOM

BUILDING AMENITIES



Conference Center



Bike Storage



On-Site Management



Tenant Lounge



On-Site Banking



24/7 Security

Prime corner office building located directly on Philadelphia's "Pedestrian Highway"

RETAIL
NEW & COMING SOON

EQUINOX
Levain
GLOWBAR
WORLD OF FLIGHT
ARITZIA + FIGS
SKIN LAUNDRY

FLIGHT CLUB
ayat
Lucy's
Reformation



Nearby Amenities

- Parking
- Hotels
- Gyms



Jacklyn Hadzor
609.760.9985
jhadzor@StocktonREA.com

Stockton Real Estate Advisors, LLC
1760 Market Street, Suite 900, Philadelphia, PA
215.636.4444 | www.StocktonREA.com

