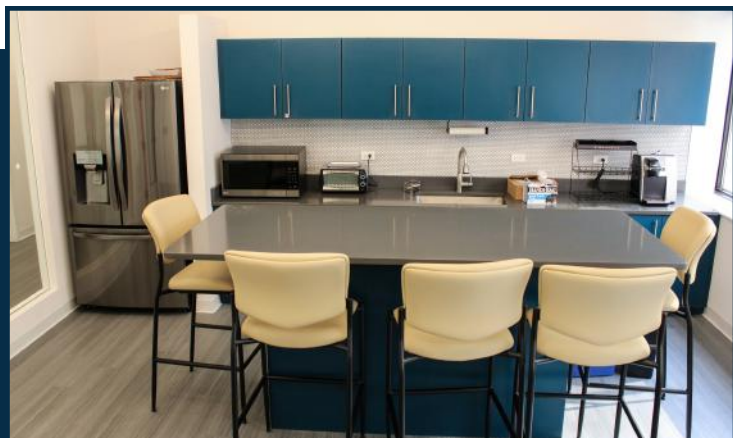


# 1760 MARKET STREET PHILADELPHIA, PA

17  
60  
MKT

SUITE 1300 | 5,852 RSF

FULLY FURNISHED, MOVE-IN READY SUITE







FULL KITCHEN AND DINING AREA



LARGE CONFERENCE ROOM

## SPACE HIGHLIGHTS

-  Twelve private offices, full kitchen, and dining area
-  One large conference rooms with glass doors, and one small conference room
-  Column-free, open work area with an abundance of natural light
-  Fully-furnished, move-in ready suite

SUITE 1300  
VIRTUAL TOUR



## BUILDING FEATURES

- Sophisticated boutique environment
- On-site building management
- Keystone Innovation Zone opportunity
- Tenant lounge and building conference center
- Designated bike room
- 24/7 manned security desk



ADDITIONAL BUILDING ENHANCEMENTS PLANNED

NOW UNDER NEW OWNERSHIP



STOCKTON  
REAL ESTATE ADVISORS

# PRIME MARKET STREET LOCATION AT THE LOWEST MARKET (STREET) RATE!

- Column-free floor plates providing maximum efficiency and flexible open floor plans.
- Unparalleled connectivity with easy access to Suburban Station, I-676, I-76, and I-95. Conveniently located minutes from PATCO Speedline and 30th Street Station.



TENANT LOUNGE & CONFERENCE ROOM

## BUILDING AMENITIES



Conference Center



Bike Storage



On-Site Management



Tenant Lounge



On-Site Banking



24/7 Security

Prime corner office building located directly on Philadelphia's "Pedestrian Highway"

**RETAIL**  
NEW & COMING SOON

EQUINOX  
Levain  
GLOWBAR  
WORLD OF FLIGHT  
ARITZIA + FIGS  
SKIN LAUNDRY

FLIGHT CLUB  
ayat  
Lucy's  
Reformation



**Nearby Amenities**

- Parking
- Hotels
- Gyms

**Jacklyn Hadzor**  
609.760.9985  
jhadzor@StocktonREA.com

**Stockton Real Estate Advisors, LLC**  
1760 Market Street, Suite 900, Philadelphia, PA  
215.636.4444 | www.StocktonREA.com

