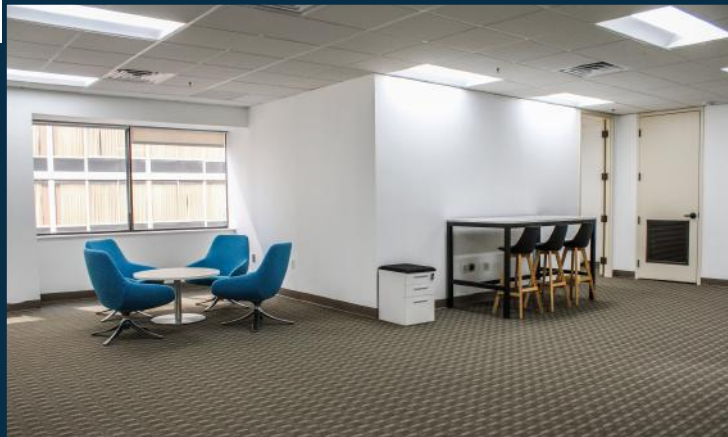


1760 MARKET STREET PHILADELPHIA, PA

17
60
MKT

SUITE 1204 | 1,490 RSF

MOVE-IN READY



FLEXIBLE, OPEN AREA WITH KITCHEN



CONFERENCE ROOM

SPACE HIGHLIGHTS



Flexible open floor plan with kitchenette and conference room overlooking 18th street



Large windows with abundant natural light, facing 18th Street

SUITE 1204
VIRTUAL TOUR



BUILDING FEATURES

- Sophisticated boutique environment
- On-site building management
- Keystone Innovation Zone opportunity
- Tenant lounge and building conference center
- Designated bike room
- 24/7 manned security desk



ADDITIONAL BUILDING ENHANCEMENTS PLANNED



STOCKTON
REAL ESTATE ADVISORS

PRIME MARKET STREET LOCATION AT THE LOWEST MARKET (STREET) RATE!

- Column-free floor plates providing maximum efficiency and flexible open floor plans.
- Unparalleled connectivity with easy access to Suburban Station, I-676, I-76, and I-95. Conveniently located minutes from PATCO Speedline and 30th Street Station.



BUILDING AMENITIES

- Conference Center
- Bike Storage
- On-Site Management
- Tenant Lounge
- On-Site Banking
- 24/7 Security

Prime corner office building located directly on Philadelphia's "Pedestrian Highway"

RETAIL
NEW & COMING SOON

- EQUINOX
- Levain
- GLOWBAR
- WORLD OF FLIGHT
- ARITZIA
- FIGS
- SKIN LAUNDRY
- FLIGHT CLUB
- ayat
- Lucy's
- Reformation

WALK SCORE
100

TRANSIT SCORE
100

BIKE SCORE
82

Nearby Amenities

- Parking
- Hotels
- Gyms

Jacklyn Hadzor
609.760.9985
jhadzor@StocktonREA.com

Stockton Real Estate Advisors, LLC
1760 Market Street, Suite 900, Philadelphia, PA
215.636.4444 | www.StocktonREA.com

